

# Warehouse Management

## Microsoft Dynamics AX

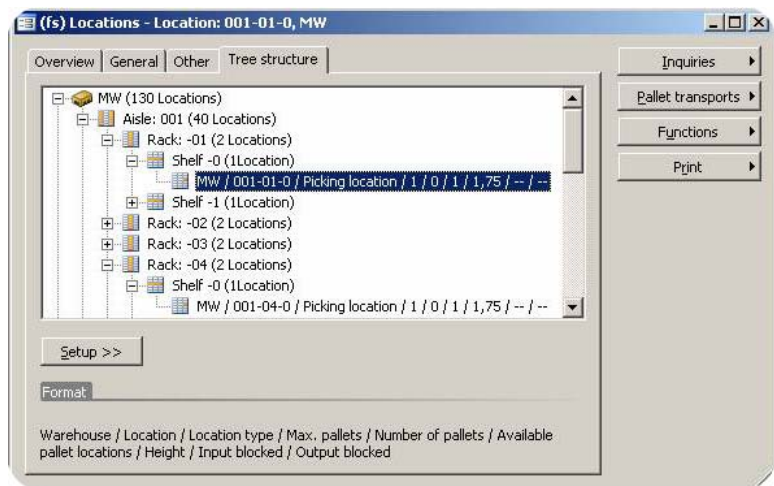
### BENEFITS:

- Optimize your warehouse layout to increase efficiency and accuracy
- Obtain a complete overview of inventory to help improve customer service
- Streamline your warehouse processes to reduce costs
- Incorporates Radio Frequency Identification (RFID) technology to identify and tag individual items

Warehouse Management in Microsoft Dynamics™ AX gives you the flexibility and control to help you optimize your warehouse processes according to your individual requirements. By improving your insight into your inventory and warehouse management tools, you are better equipped to increase customer satisfaction and reduce your costs.

### Optimize your warehouse layout

Warehouse Management in Microsoft Dynamics AX gives you the flexibility to define your warehouse layout according to your changing needs, so you can achieve optimum warehouse efficiency. Establish high- and low-priority storage areas for optimum placement of goods and block locations to restrict movement of goods. Divide your warehouse into zones to accommodate different storage needs such as temperature requirements or the rate of turnover of various items. You can specify warehouse locations on five levels: warehouse, aisle, rack, shelf and bin. And define each location based on parameters such as space and pallet type. In addition, you can either control how items are stored based on predefined location rules, or have the flexibility to randomly manage item storage.



*Flexibly manage storage of items according to different location parameters including location types, space and pallet heights.*

## **Increase your warehouse efficiency and accuracy**

Warehouse Management in Microsoft Dynamics AX helps you allocate warehouse space efficiently by automatically identifying optimal storage locations for items, based on the characteristics of items and warehouse zones. All warehouse activities are recorded in journals, so you can recreate a complete history of actions and item identifiers using an audit trail. Either Bar-coding or RFID can be used to increase the speed and accuracy of picking and putting away of items.

Warehouse Management in Microsoft Dynamics AX also helps you determine the most logical sequence of picking locations in order to optimize your picking routes and speed up order fulfillment to your customers. Picking routes are allocated by the system based on parameters such as zones, and height of locations. Several orders can be included in one route to enable better use of pallet loads and further increase warehouse efficiency. You can achieve faster picking and packing with good visibility into possible pick locations from the shipment. Advanced shipping notices help you to send information to the receiver to let them know what they are going to receive in advance. And you can improve overall efficiency with transfers, using lead time and item tracking, even including bills of lading, when moving items between warehouses.

## **Increase customer satisfaction**

Register goods as they arrive at the warehouse, so that they are visible throughout the system before they have been placed in inventory. You can reserve items for customers, including items from a specific location or batch, while entering a sales order. This reservation is recognized by all functions in Microsoft Dynamics AX, such as inventory counts, planning of production and others, to help ensure that customer demands are satisfied.

## **Get a complete overview of your inventory**

In order to track items internally and throughout the supply chain, you can automatically have inventory stamped with an inventory dimension number linked to shipments and deliveries. For improved traceability, Warehouse Management in Microsoft Dynamics AX lets you create as many serial or batch numbers for the automatic numbering of items as you require.

Determine the exact location of a specific item in your warehouse by using inventory dimensions, which can include information regarding warehouse batch number, location, pallet ID, serial number and RFID tags. Inventory dimensions, are also a powerful tool to track serial and batch numbers and can be used to get a clear overview of items in your warehouse.

## FEATURES

<b>Placement and storage</b>	<ul style="list-style-type: none"> <li>Specify different location and storage policies at both the warehouse level and the item level</li> <li>Specify warehouse locations on five levels: warehouse, aisle, rack, shelf and bin</li> <li>RFID capabilities provide improved accuracy</li> </ul>
<b>Inventory dimensions</b>	<p>Eight different dimensions to specify exact location of items in inventory</p> <p>Identification of:</p> <ul style="list-style-type: none"> <li>physical location: warehouse and location*</li> <li>physical location: warehouse, location and pallets</li> <li>item origin: serial number and batch number</li> <li>characteristics: configuration, color and size</li> </ul>
<b>Serial and batch number control</b>	<ul style="list-style-type: none"> <li>Stamp a single item or a group of items with a unique number for tracking</li> </ul>
<b>Random-location storage</b>	<ul style="list-style-type: none"> <li>Determine the storage location based on rules regarding size, volume and height</li> <li>Allocate storage based on priority of picking locations first and then buffer locations</li> </ul>
<b>Arrival journals and put-away</b>	<ul style="list-style-type: none"> <li>Simplify item registration</li> <li>Make items available on-hand in inventory immediately after posting of arrival journal</li> <li>Have the option of either manual or automatic suggestion of put-away locations according to storage and item setup. Put-away can be done with use of pallet transport.</li> </ul>
<b>Pick &amp; shipments with output orders</b>	<ul style="list-style-type: none"> <li>Derive output orders from sales order lines or production order lines as requisitions to warehouse</li> <li>Release order picking sales order ensures you have stock available to multiple orders</li> <li>Specify that shipments are sales order specific or customer specific</li> <li>Include shipments for multiple orders per customer</li> <li>Define shipments so that they result in the creation of optimized picking routes with pick from picking- and backup locations</li> </ul>
<b>Different pallet types</b>	<ul style="list-style-type: none"> <li>Create pallet transports from the following order types: input, output or refill orders</li> <li>Allocate prioritization to order types</li> <li>Consider different pallet types corresponding to different sizes when selecting locations</li> <li>RFID registers the pallets, inventory items and controls them throughout the supply chain</li> </ul>
<b>RFID &amp; bar-coding</b>	<ul style="list-style-type: none"> <li>Read and write the following five different types of bar codes: EAN128/UCC128, Code 39, Interleaved 2 of 5, Code 128, UPC A, UPC E, EAN13, EAN8</li> <li>Read and write to RIFD-EPC tags</li> <li>RFID registers pallets and inventory items and controls them throughout the supply chain</li> <li>Print pallet label, location label and bill of lading labels containing bar codes</li> </ul>
<b>Quarantine management</b>	<ul style="list-style-type: none"> <li>Specify quarantine requirements at the item level</li> <li>Automatically send and lock quarantine items pending inspection to the quarantine warehouse</li> </ul>

*\*This functionality is included in the Standard Warehouse Management in Microsoft Dynamics AX module. All other functionality listed on this data sheet is included in the Advanced Warehouse Management module.*

**For more information about Microsoft Dynamics AX, visit:**  
[www.microsoft.com/dynamics/ax](http://www.microsoft.com/dynamics/ax).

This document is for informational purposes only. MICROSOFT MAKES NO WARRANTIES, EXPRESS, IMPLIED, OR STATUTORY, AS TO THE INFORMATION IN THIS DOCUMENT.

© 2006 Microsoft Corporation. All rights reserved. Microsoft, Axapta, Microsoft Dynamics, the Microsoft Dynamics logo, and Windows Server System are either registered trademarks or trademarks of Microsoft Corporation in the United States and/or other countries. Microsoft Business Solutions ApS is a subsidiary of Microsoft Corporation.

**Microsoft**